

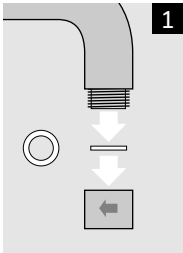


# How to fit your ShowerBoB tap regulator

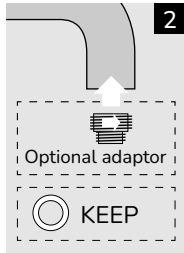
Your ShowerBoB tap regulator is designed to reduce the water flow from your tap. Water is aerated with soft tiny bubbles so the flow feels just as strong, helping you save water, energy and money.

## Instructions

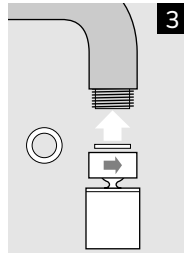
Watch our how-to-fit video at [www.showerbob.co.uk/installation](http://www.showerbob.co.uk/installation) or follow these simple steps:



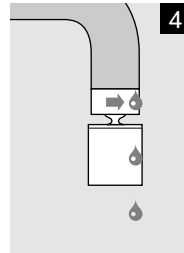
1 Make sure the tap is turned off. Put your plug in the sink to prevent you losing any components and unscrew the existing tap end cap on the spout



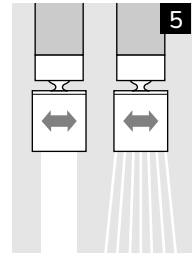
2 Keep the rubber washer safe to use with your new tap regulator – you may need to use the adaptor that comes with the tap regulator to fit your specific tap



3 Carefully screw your new tap regulator onto the threaded spout end, clockwise



4 Turn on the tap and check for leaks. If there is a leak, tighten the tap regulator to the tap spout by hand



5 You can alternate the flow between the stream and spray functions by twisting the regulator.

SUITABLE for mixer taps.

ShowerBoB (BoB Products Ltd) cannot accept any liability for damage incurred to your fittings or property due to installation or use of this tap regulator.



SHOWERBOB  
[www.showerbob.co.uk](http://www.showerbob.co.uk)

