

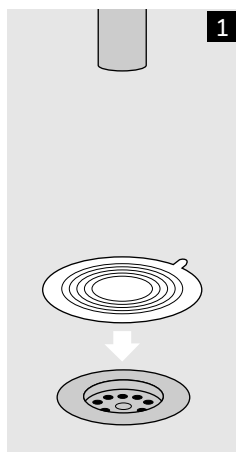


How to fit your ShowerBoB universal sink plug

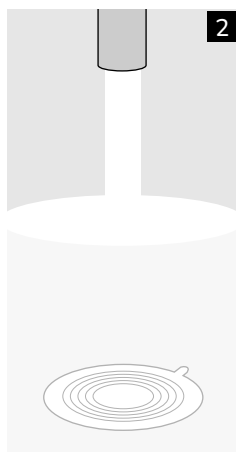
Your ShowerBoB sink plug will work with most kitchen and bathroom plugs, helping you save water, energy and money.

Instructions

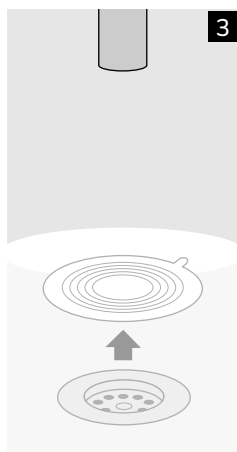
Watch our how-to-fit video at www.showerbob.co.uk/installation or follow these simple steps:



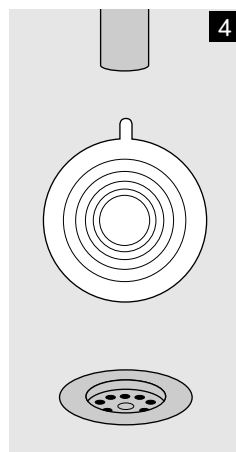
1 Place the sink plug over any suitably-sized plug hole



2 Run your tap – the weight of water will force the plug to seal the plug hole



3 To empty the water, pull the plug away from the surface to let the water drain away



4 You can stick your sink plug onto the wall of your sink ready for next time

We cannot guarantee they will work with every plug hole.

ShowerBoB (BoB Products Ltd) cannot accept any liability for damage incurred to your fittings or property due to installation or use of this sink plug.

SHOWERBOB

www.showerbob.co.uk

