

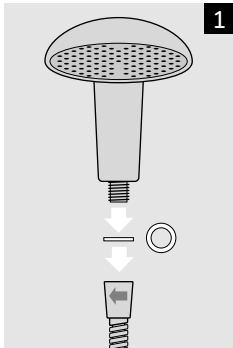


How to fit your ShowerBoB Curve water efficient shower head

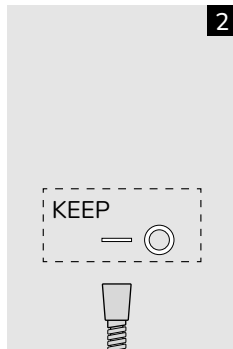
Your ShowerBoB Curve shower head is designed to reduce the water flow without affecting your shower experience. A built-in flow regulator means you can enjoy your shower while saving water, energy and money.

Instructions

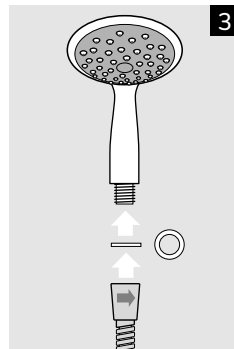
Watch our how-to-fit video at www.showerbob.co.uk/installation or follow these simple steps:



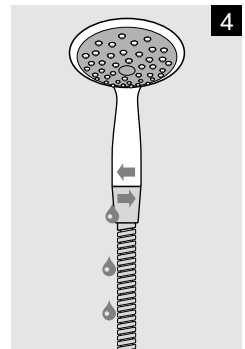
1 Make sure the shower is turned off and unscrew the existing shower head from the hose



2 Keep the rubber washer in place to use with your new shower head



3 Screw in the new shower head to the hose securely by hand



4 Turn on the shower and check for leaks. If there is a leak, tighten the shower head to the hose.

SUITABLE for combi boilers and gravity showers.

NOT SUITABLE for electric, multi-jet, digital, power showers, lower pressure, or gravity-fed systems with less than 0.5 bar pressure.

ShowerBoB (BoB Products Ltd) cannot accept any liability for damage incurred to your fittings or property due to installation or use of this shower head.



SHOWERBOB
www.showerbob.co.uk

